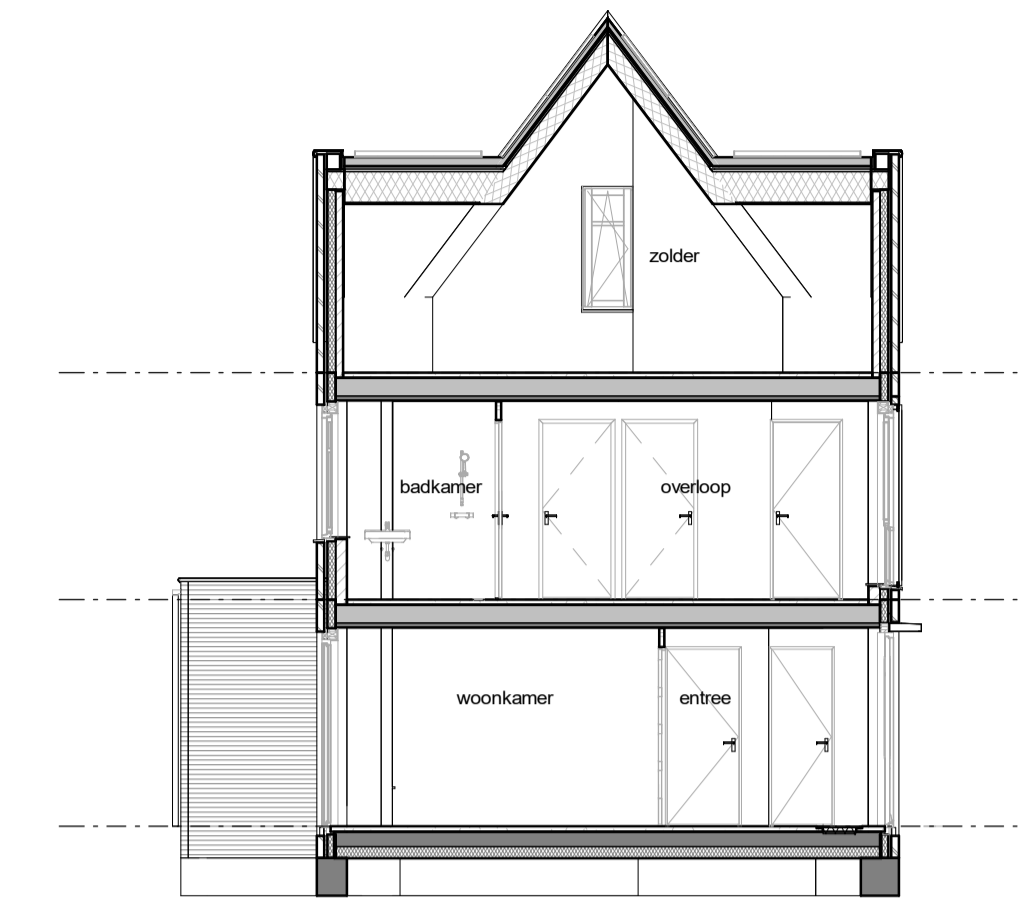


voorgevel

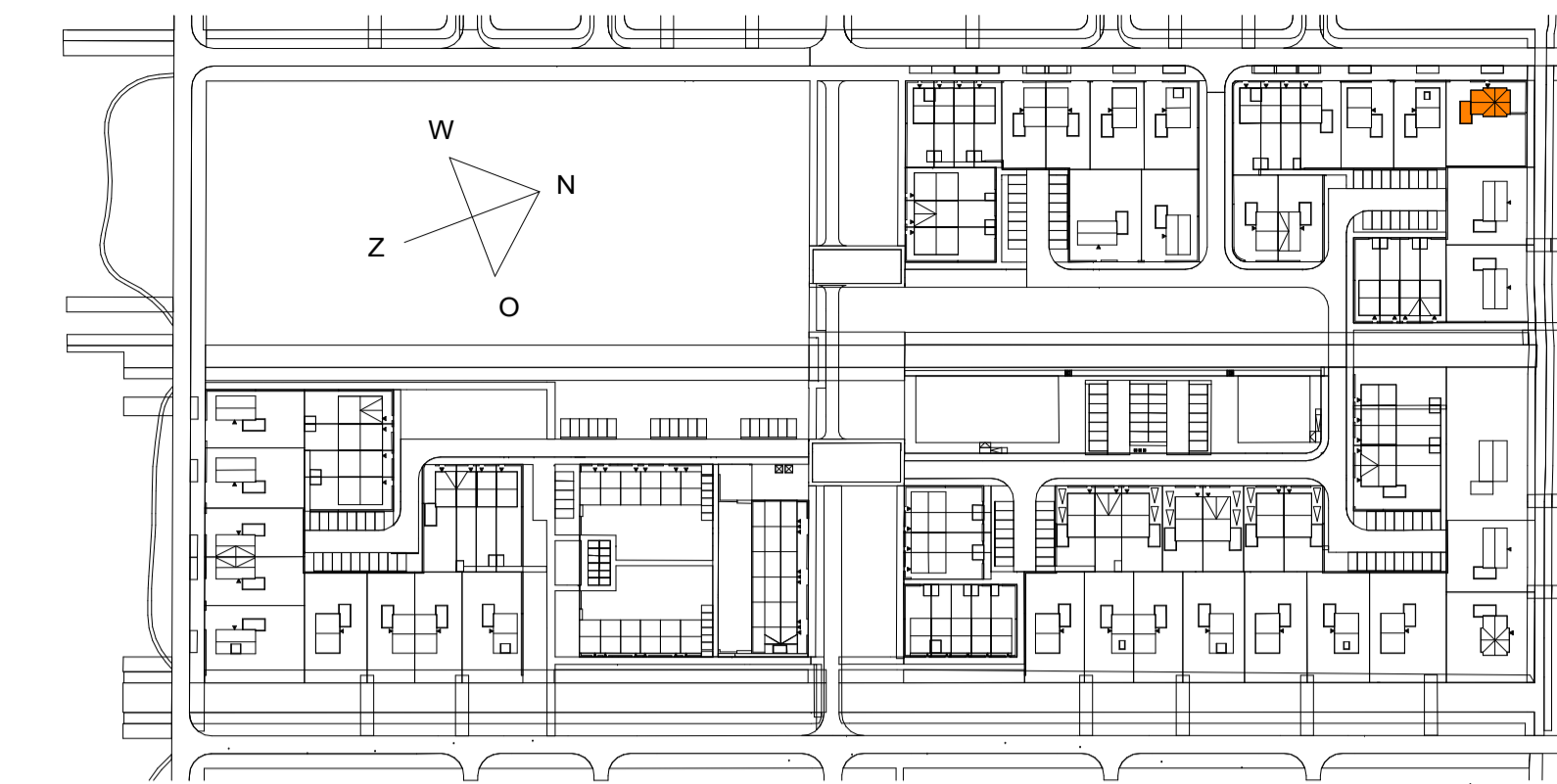
kopgevel rechts

achtergevel

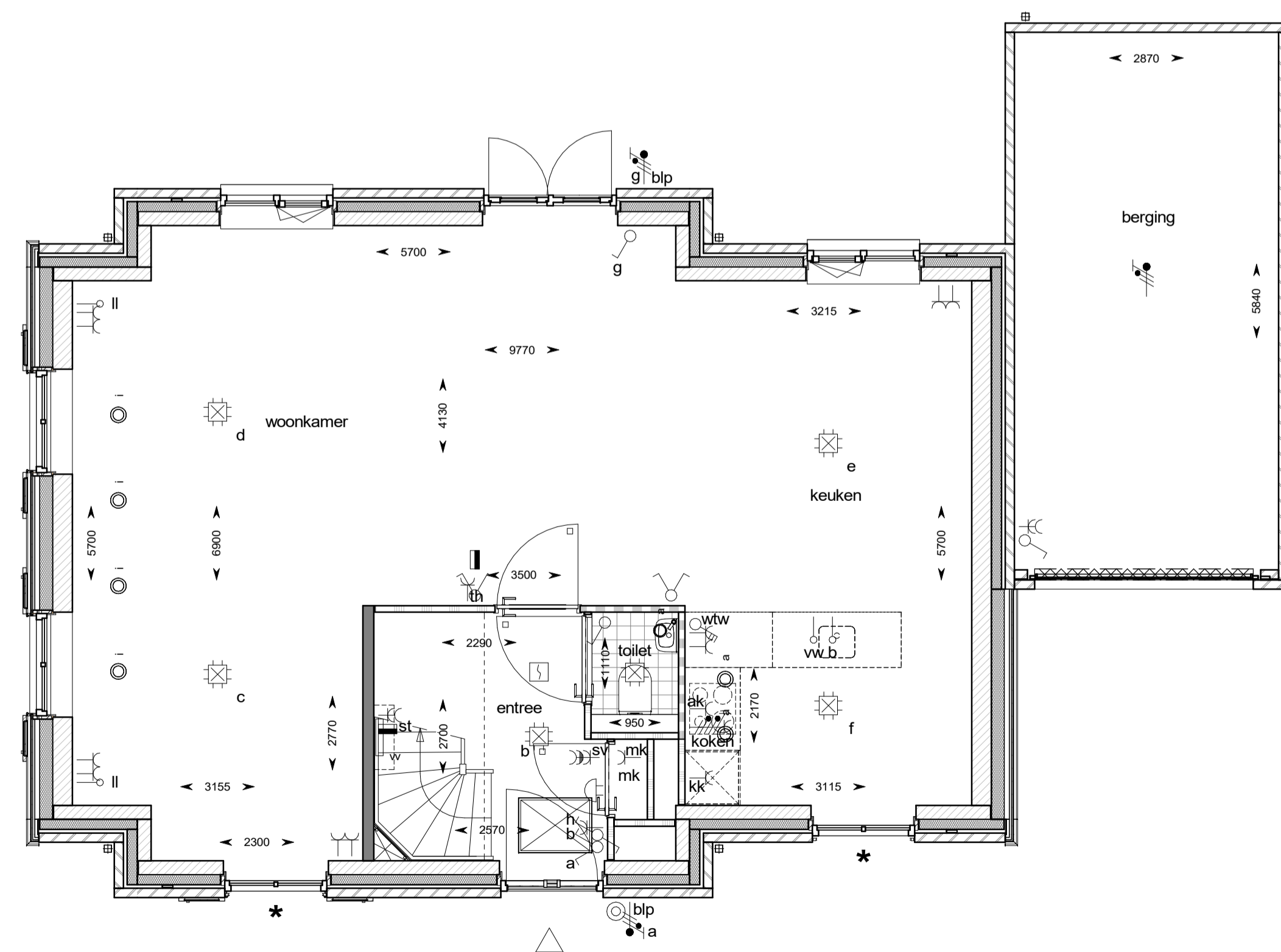
kopgevel links



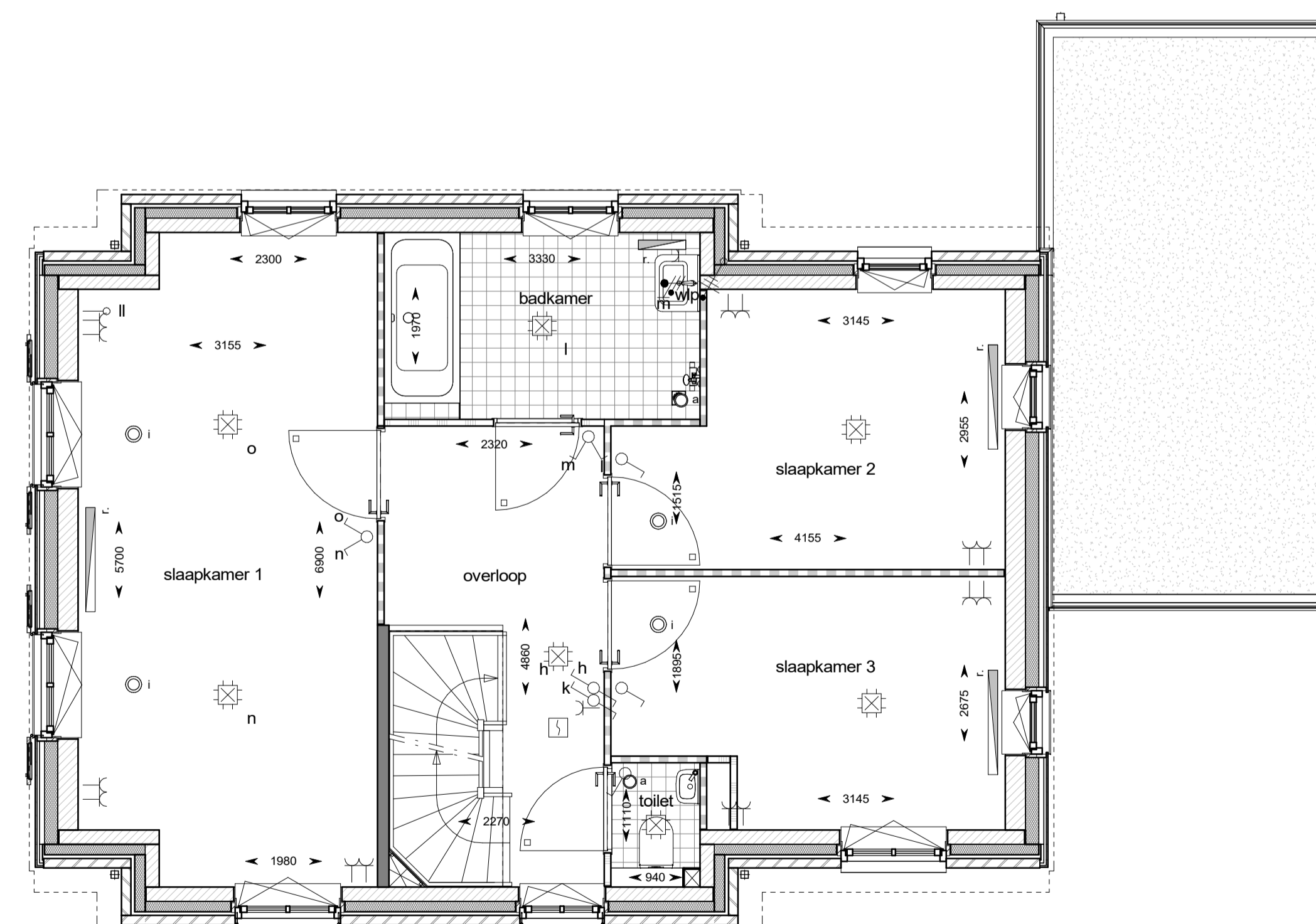
doorsnede



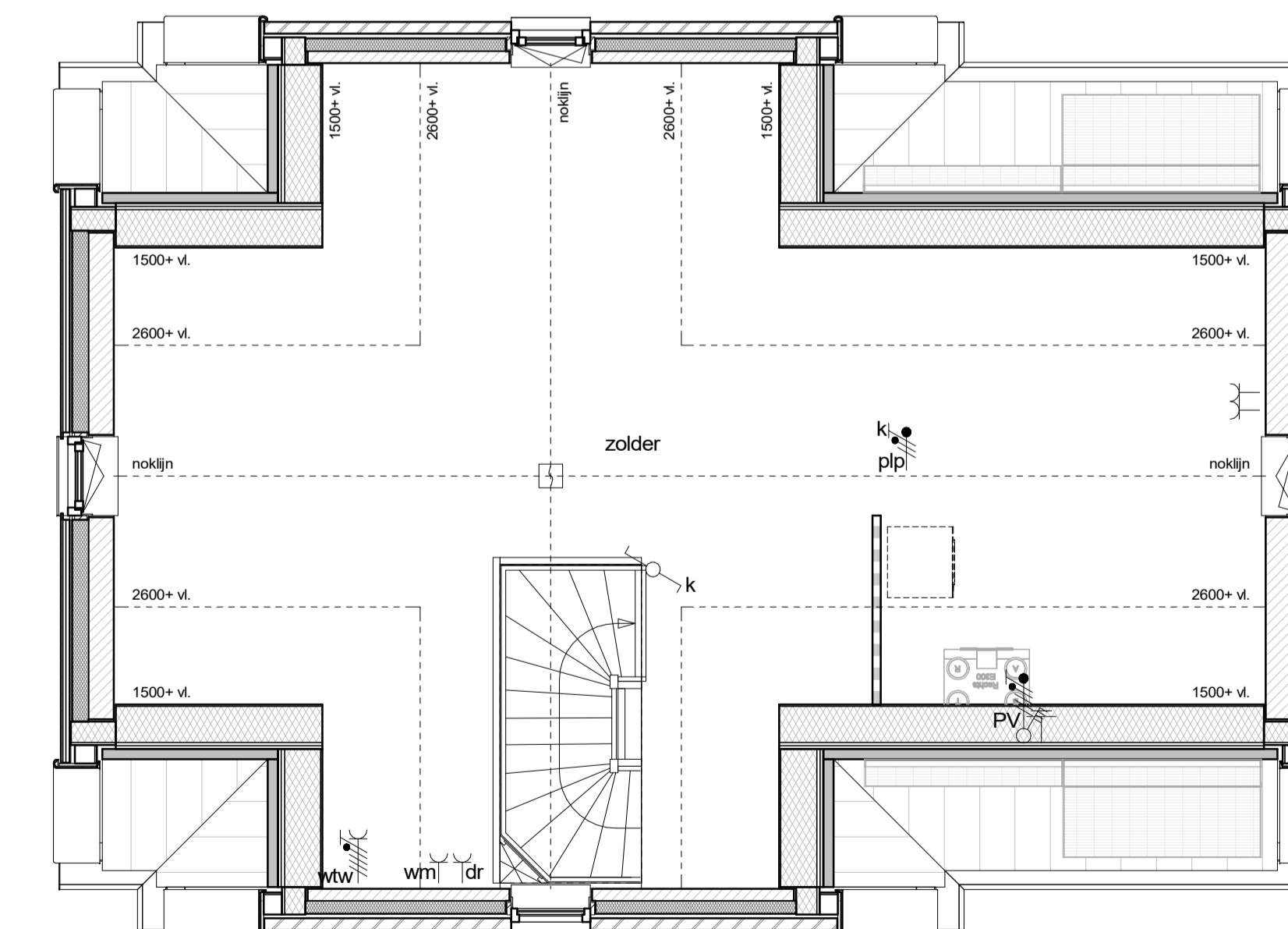
woningaanduiding  
1 : 2000



begane grond



eerste verdieping



tweede verdieping

**HANS BEEN**  
ARCHITECTEN BNA

Industrieweg Zuid 24  
Postbus 2  
+31 (0)363 450 211

3958 VX Amerongen  
3959 ZT Amerongen  
www.hansbeen.nl

project:  
**De Keyser - fase 6 en 7**

projectnummer:  
**0365**

projectarchitect:  
**E. Aartsma**

onderwerp:  
**bnr 607**

**type F2**

schaal:  
**1:50 / 1:100**

datum:  
**11-11-2022**

formaat:  
**A3**

gekleurd:  
**H.M. van den Berg**

wijziging:

tekennummer:  
**VK-607**

project fase:  
**VK**

© All rights reserved by Hans Been Architecten BNA B.V.  
Let op! maten in het werk te controleren.