

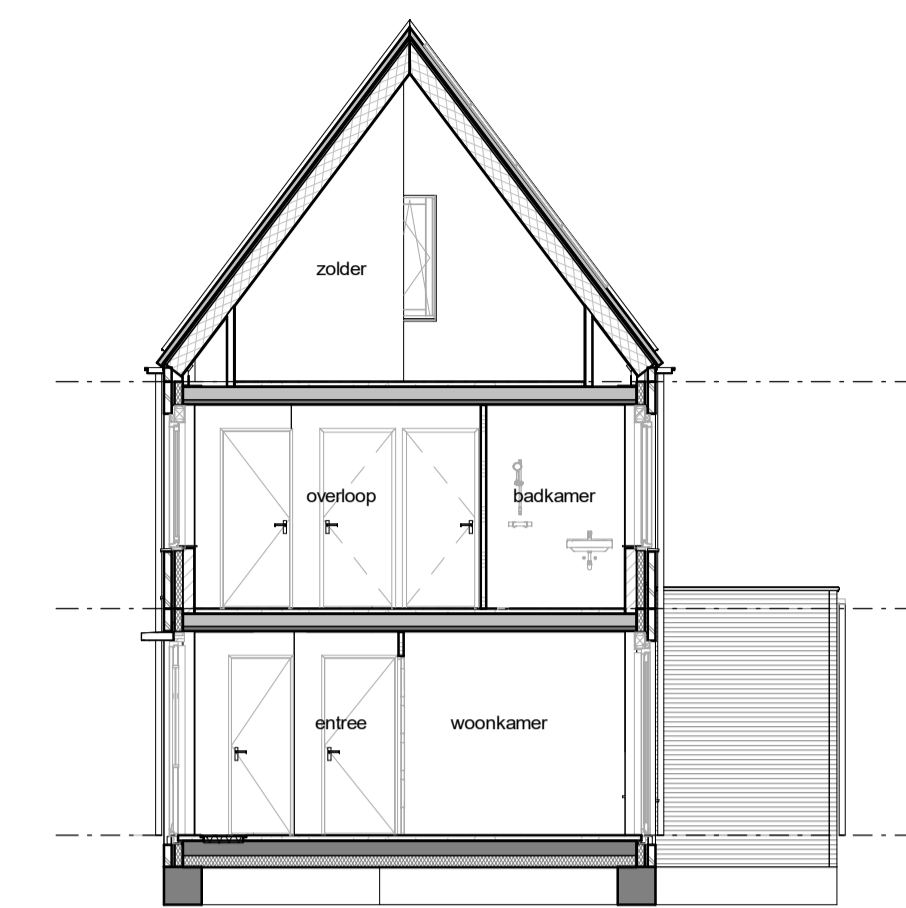


voorgevel

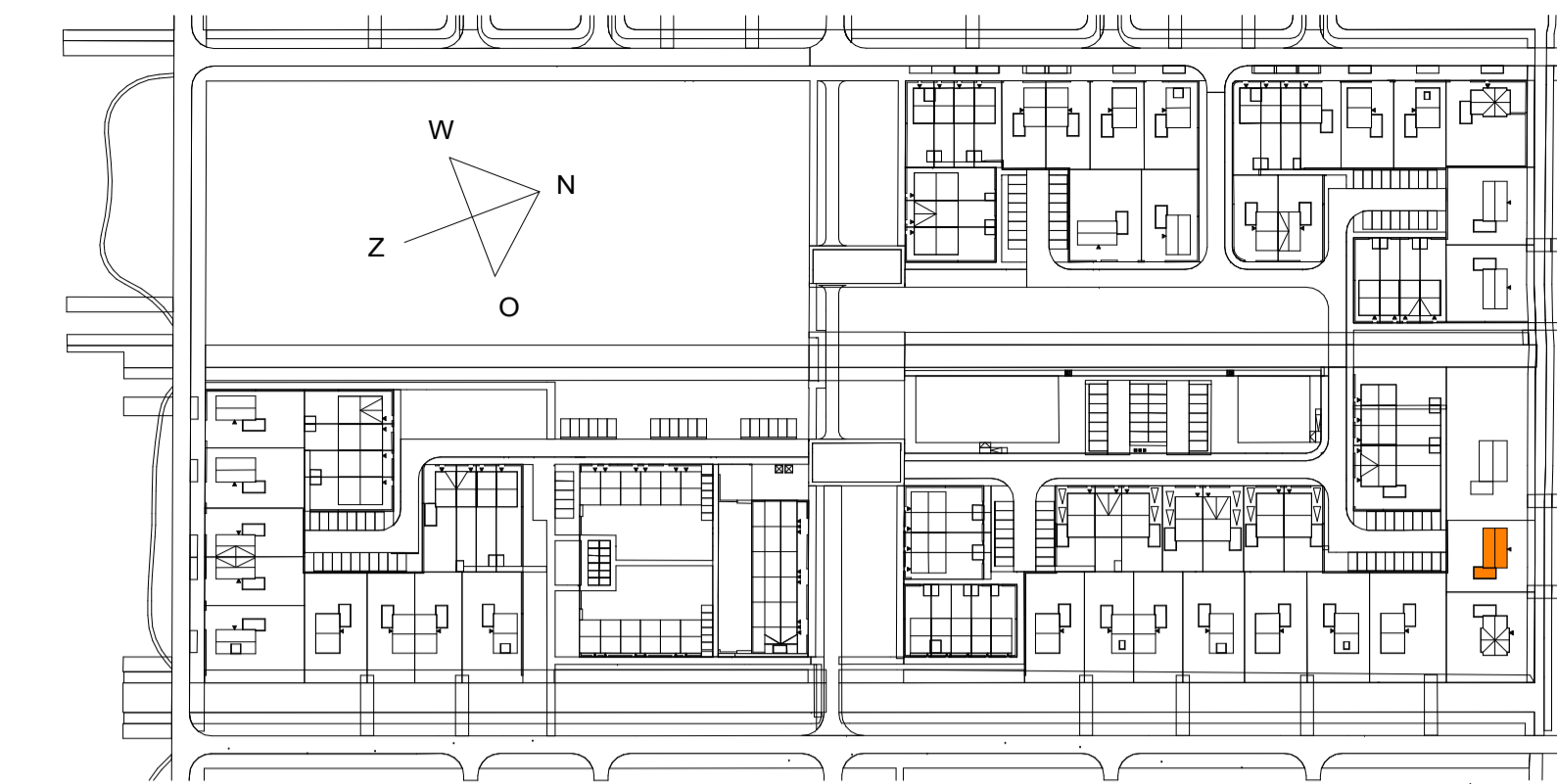
kopgevel rechts

achtergevel

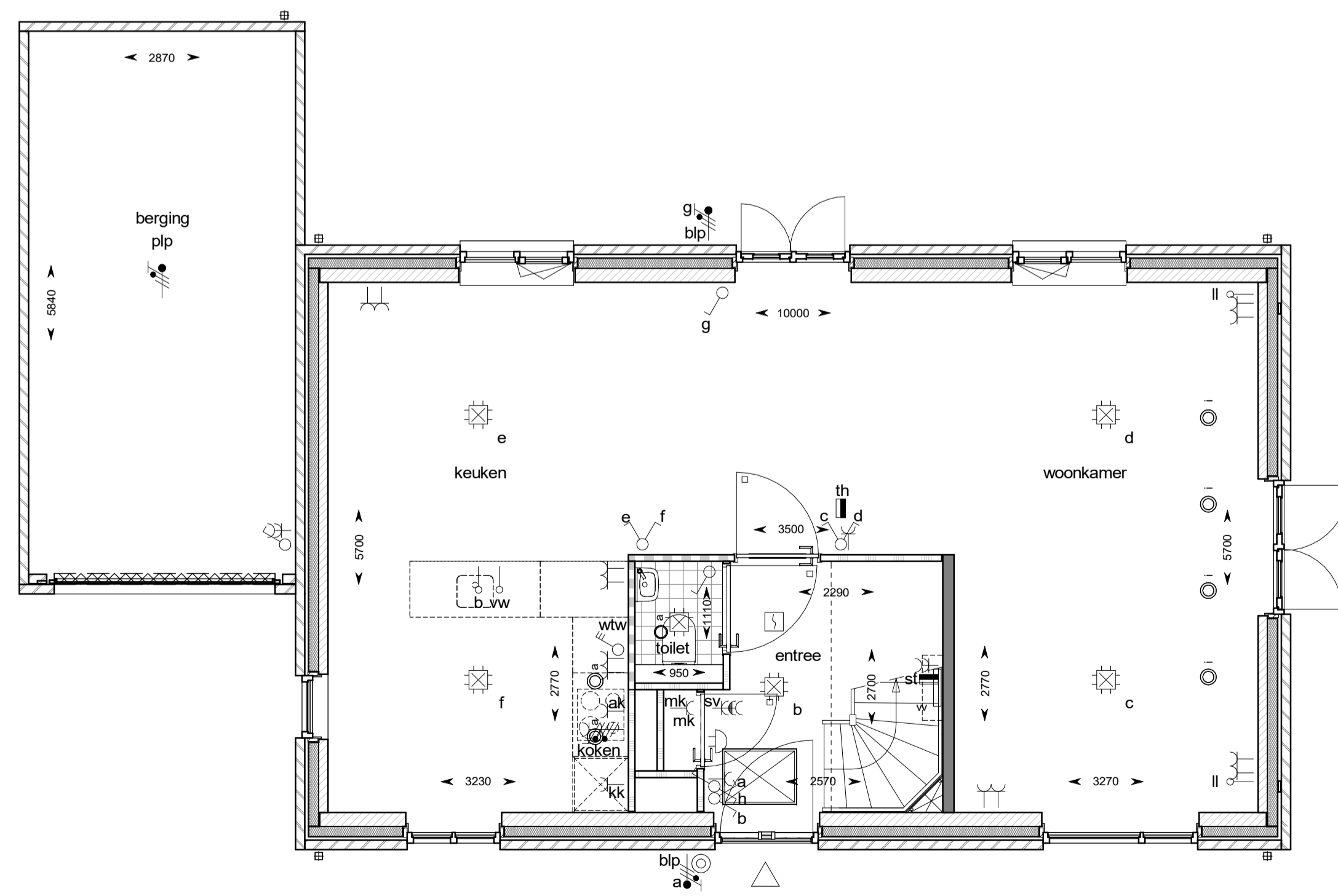
kopgevel links



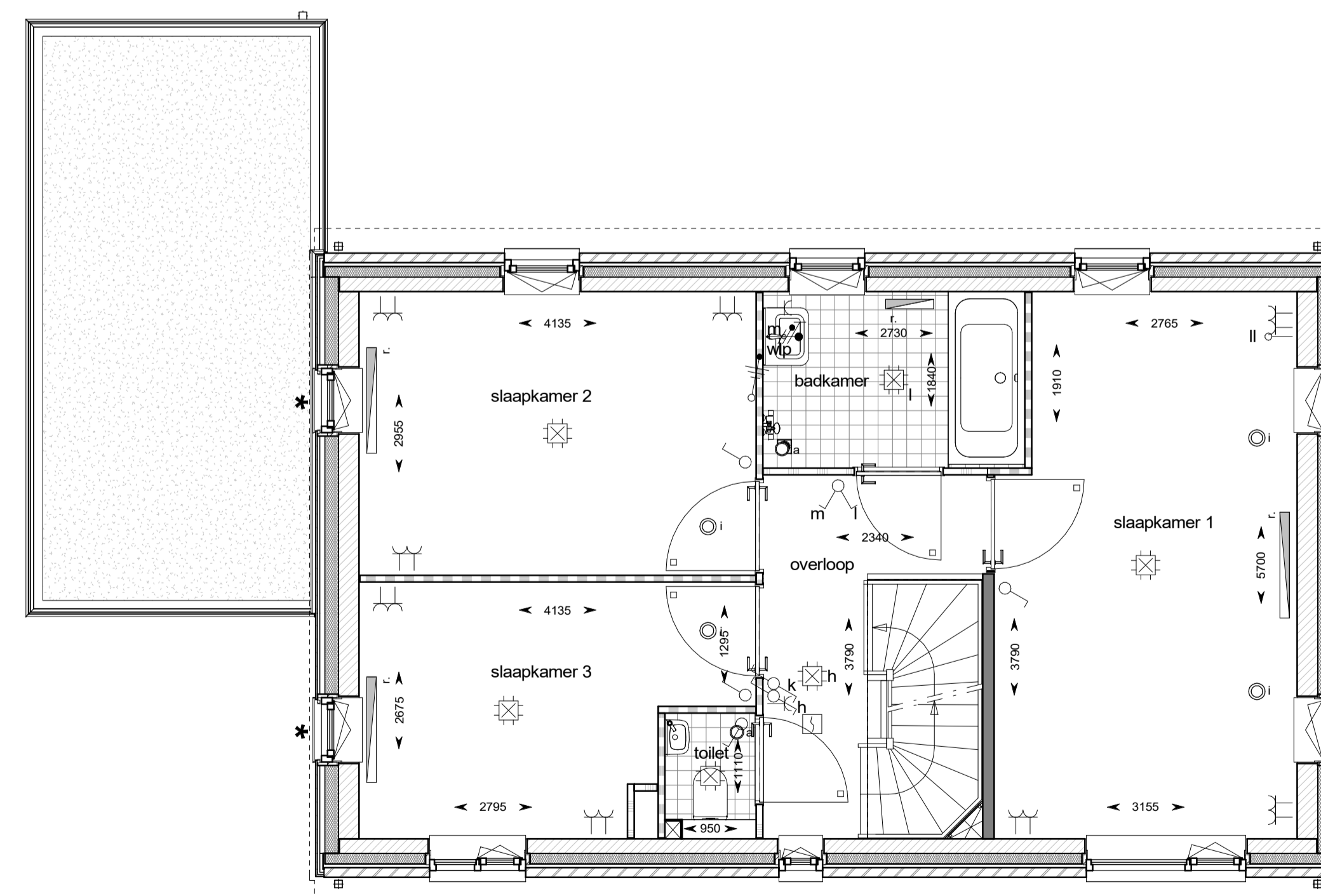
doorsnede



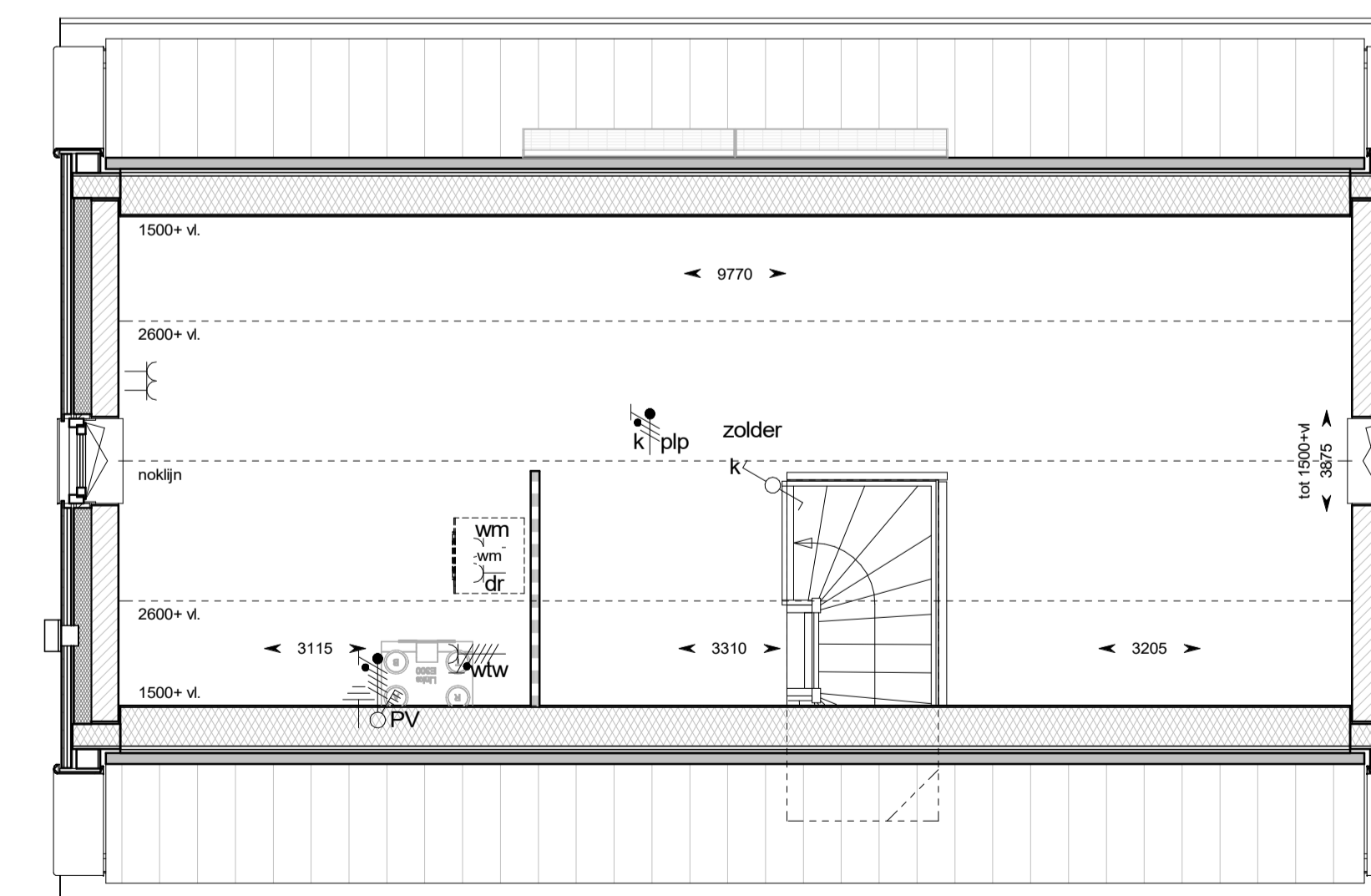
woningaanduiding
1 : 2000



begane grond



eerste verdieping



tweede verdieping

HANS BEEN
ARCHITECTEN BNA

Industrieweg Zuid 24
Postbus 2
+31 (0)363 450 211

3958 VX Amerongen
3958 ZT Amerongen
www.hansbeen.nl

project:
De Keyser - fase 6 en 7

projectnummer:
0365

projectarchitect:
E. Aartsma

onderwerp:
**bnr 702
type F1s**

schaal:
1:50 / 1:100

datum:
11-11-2022

formaat:
A3

gekleurd:
H.M. van den Berg

wijziging:

tekeningnummer:

VK-702

project fase:

VK

© All rights reserved by Hans Been Architecten BNA B.V.
Let op! maten in het werk te controleren.