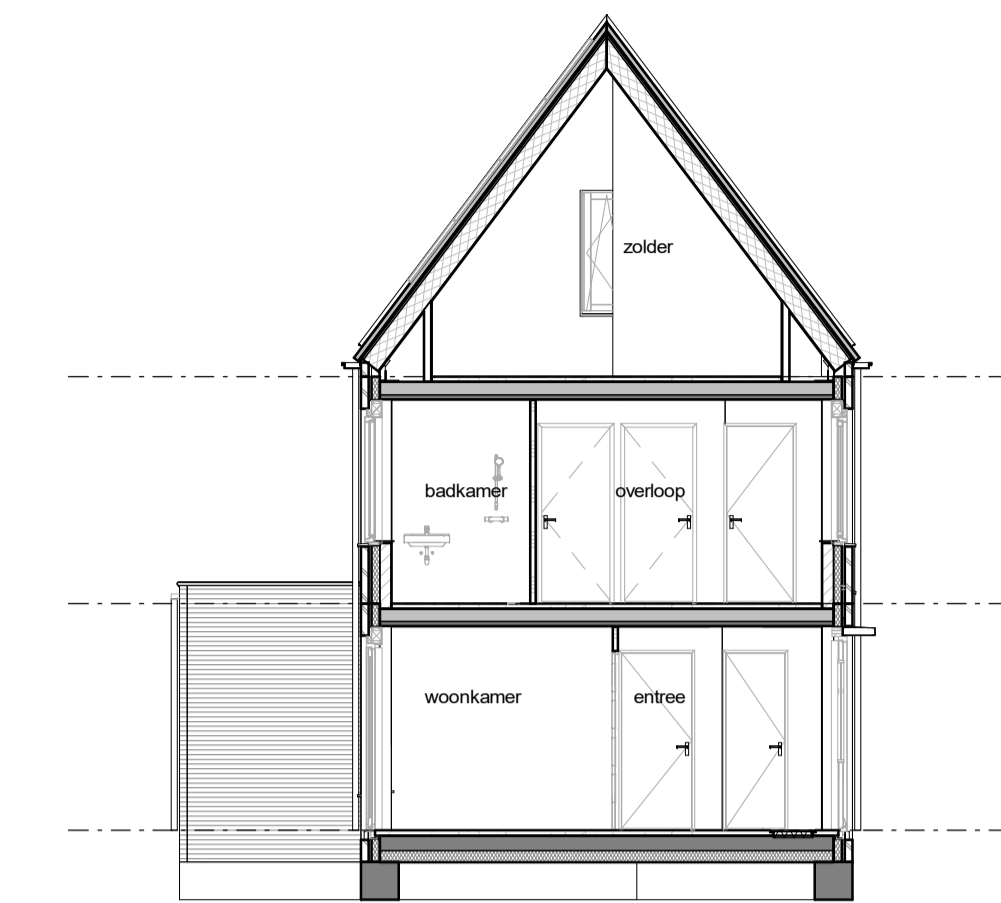


voorgevel

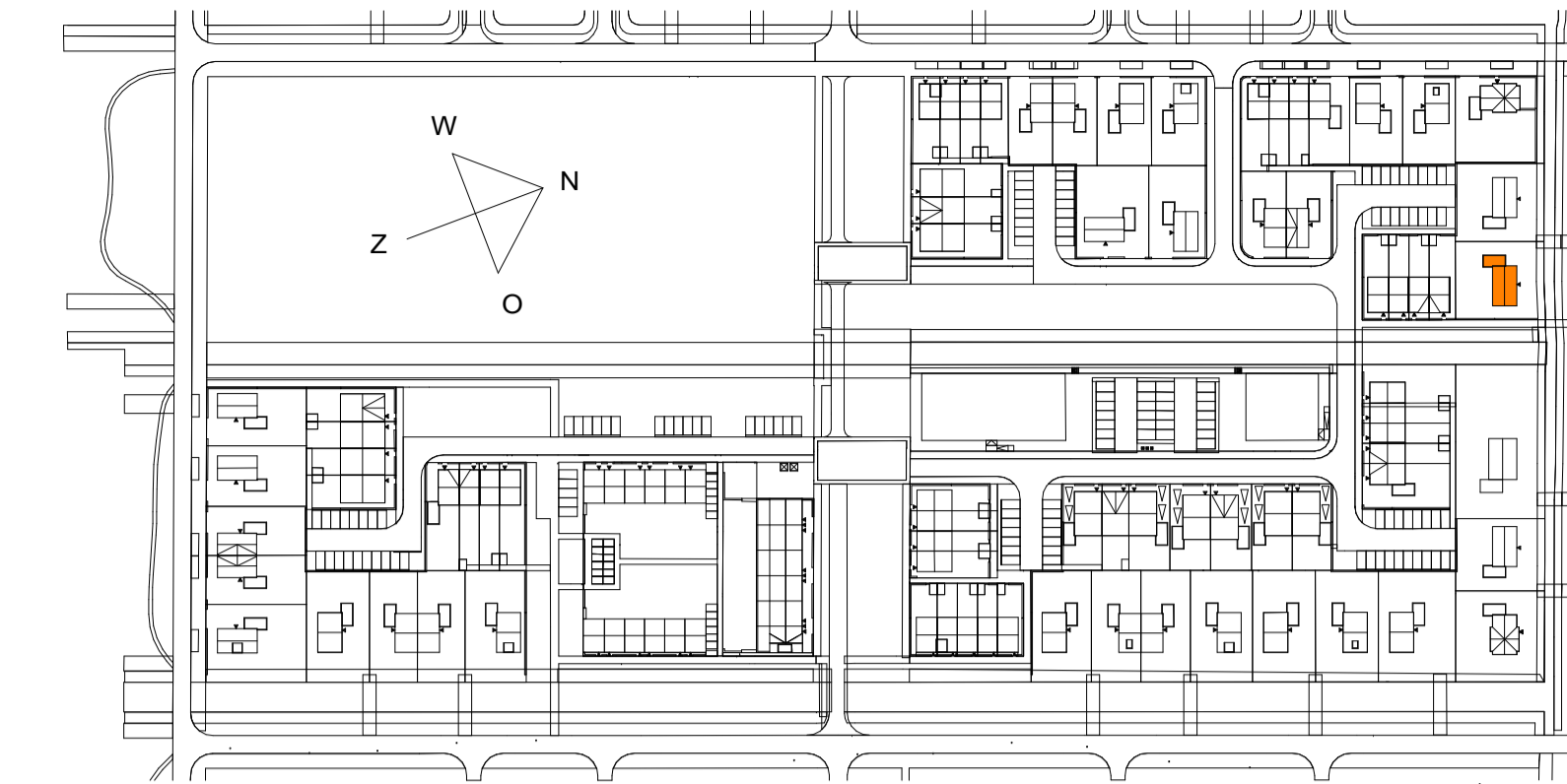
kopgevel rechts

achtergevel

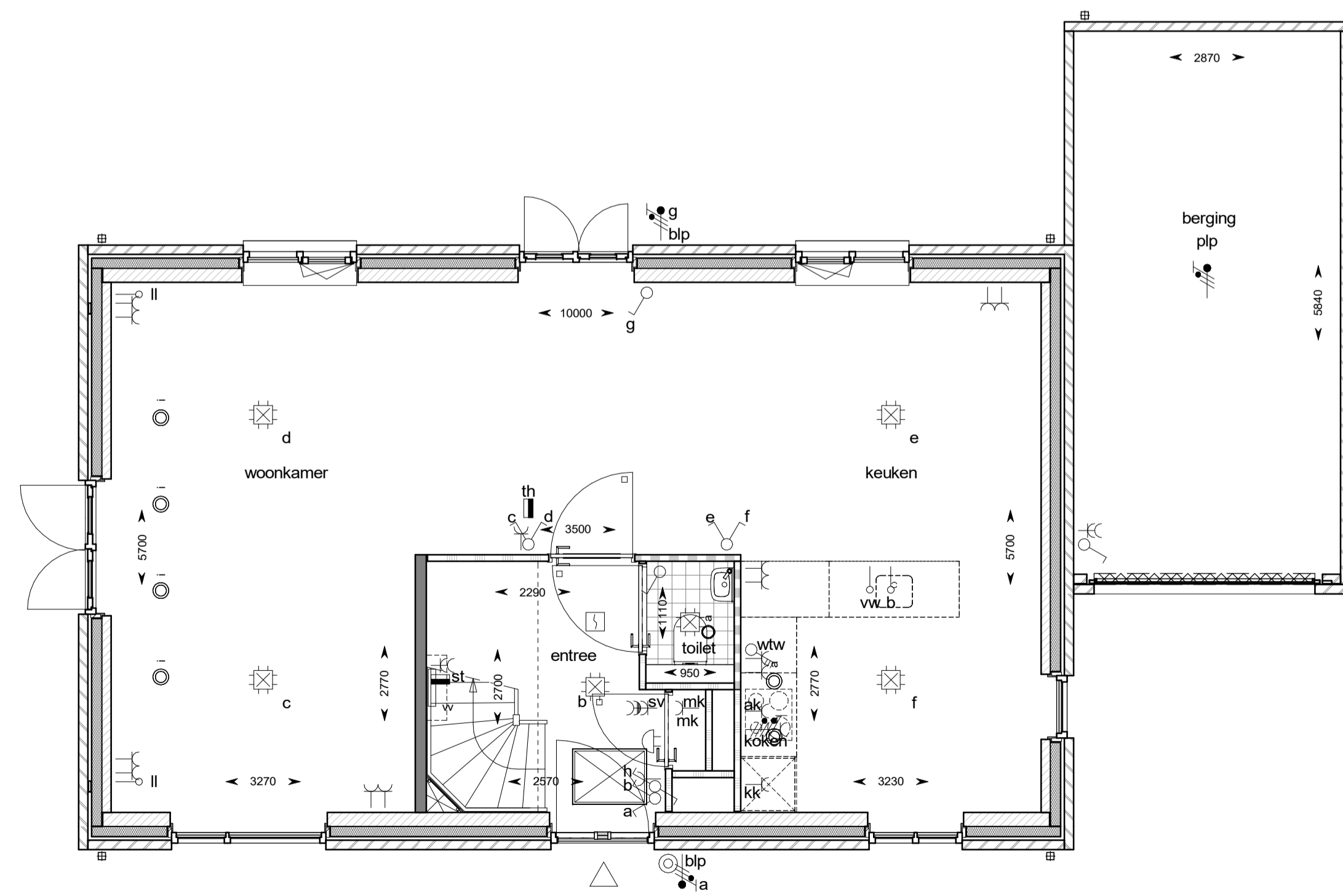
kopgevel links



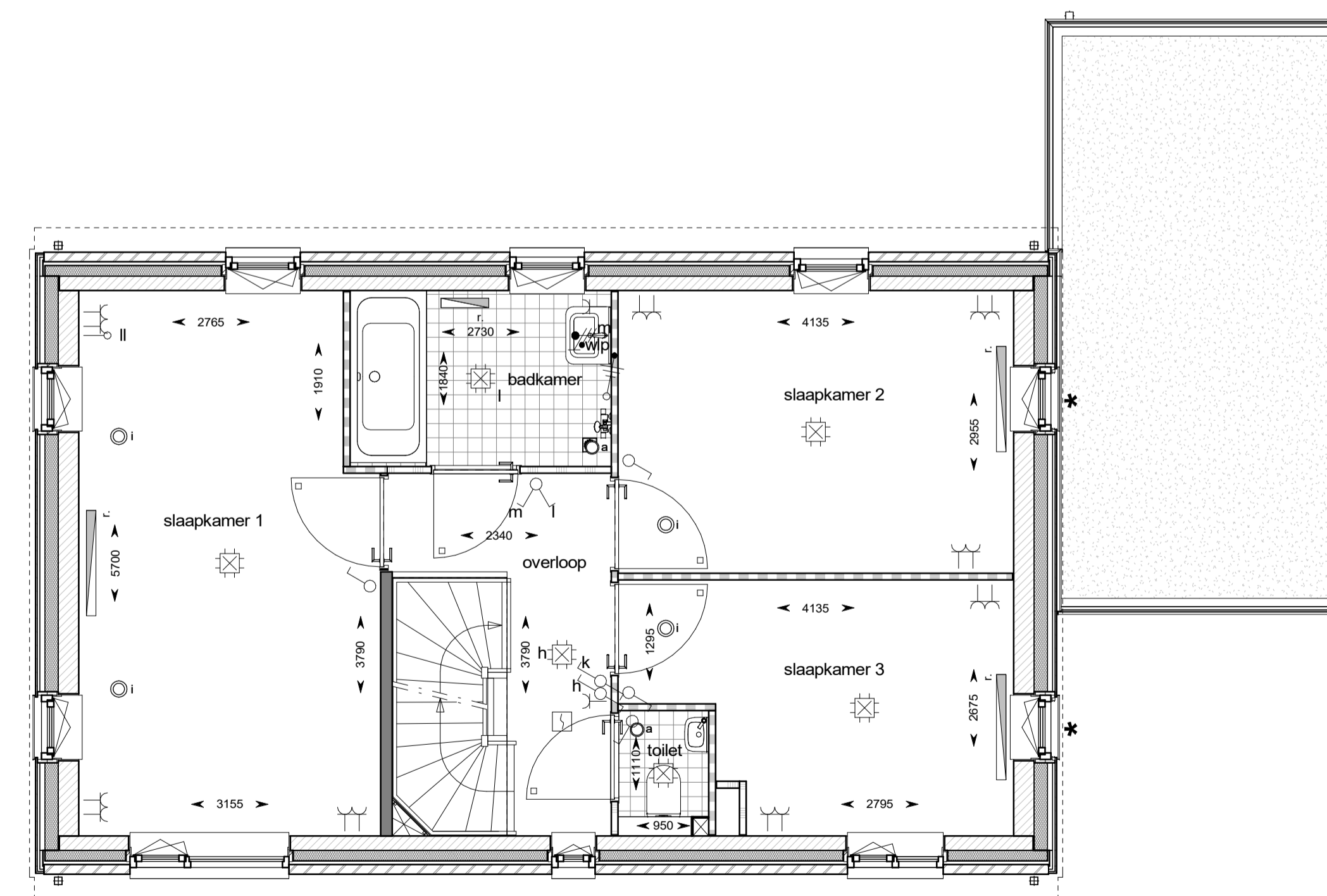
doorsnede



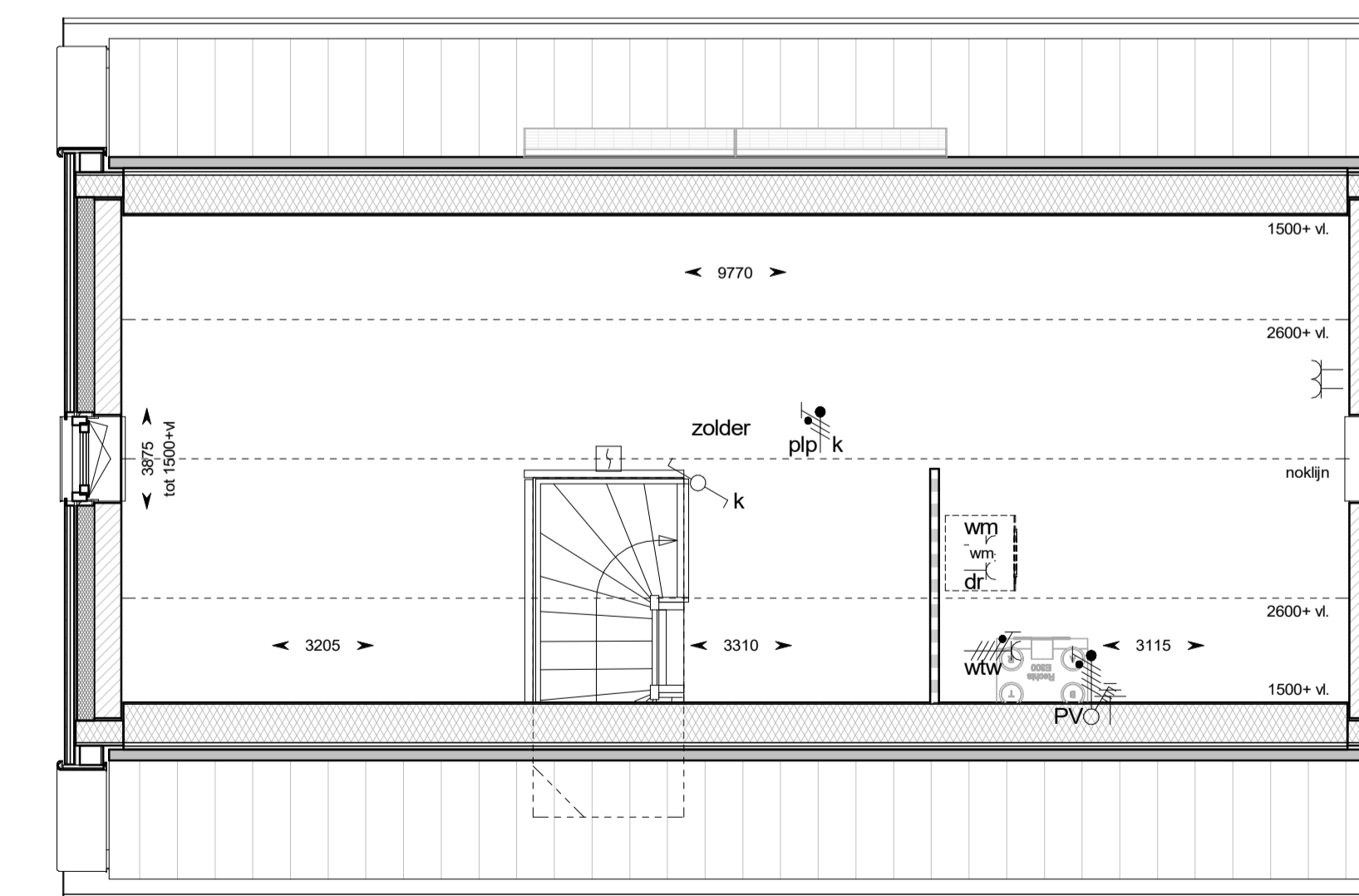
woningaanduiding
1 : 2000



begane grond



eerste verdieping



tweede verdieping

HANS BEEN
ARCHITECTEN BNA

project:
Industrieweg Zuid 24
Postbus 2
431 0343 450 211

3958 Vx Amerongen
3958 ZT Amerongen
www.hansbeen.nl

projectnummer:
0365

projectarchitect:
E. Aartsma

onderwerp:
**bnr 605
type F1**

schaal:
1:50 / 1:100

formaat:
A3

wijziging:

datum:
11-11-2022

getekend:
H.M. van den Berg

tekennummer:
VK-605

project fase:
VK

© All rights reserved by Hans Been Architecten BNA B.V.
Let op! maten in het werk te controleren.